

# Paumelles *Hinges*

## LAGUNE & LUMIRA

### Caractéristiques techniques

- Pour verre trempé de 8 à 10 mm
- Montage sur encoche 6200EF
- Dimension maximum des portes  
827 mm x 2034 mm
- Poids maximum admissible 45 kg pour 2 paumelles,  
pour un poids supérieur pose obligatoire  
d'une 3ème paumelle

### Technical features

- For 8 to 10 mm thick toughened glass
- To fit notch 6200EF
- Dimensions size of doors 827 mm x 2034 mm
- Max load 45 kg for 2 hinges, for load exceeding  
a third hinge must be fitted



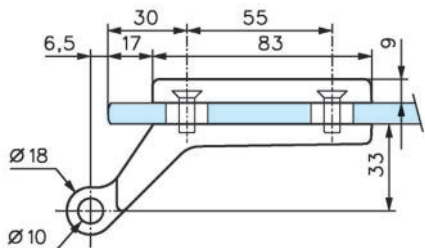
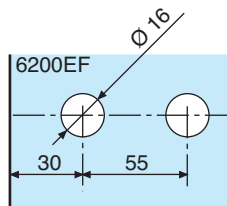
### LES + PRODUITS

Design des serrures  
Lagune et Lumira

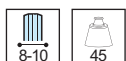
*Lagune and Lumira  
lock design*



# 4200



## Références / References



Chromé brillant  
Bright chromium



Chromé mat  
Matt chromium



Effet inox  
Stainless steel effect



Doré  
Gold plated



Laqué blanc 9010  
Lacquered white RAL 9010

Paumelle pour feuillures de 35 à 40 mm,  
s'utilise avec les fiches 3204 - 3205 - 3206  
Hinge for rebate of 35 to 40 mm, to fit  
butts 3204 - 3205 - 3206

4200.30.0

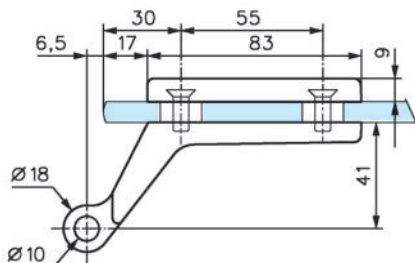
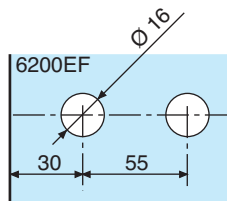
4200.31.0

4200.35.0

4200.40.0

4200.51.0

# 4201



## Références / References



Chromé brillant  
Bright chromium



Chromé mat  
Matt chromium



Effet inox  
Brushed stainless steel



Doré  
Gold plated



Laqué blanc 9010  
Lacquered white RAL 9010

Paumelle pour feuillures supérieures  
à 40 mm, s'utilise avec les fiches  
3204 - 3205 - 3206  
Hinge for rebate larger than 40 mm,  
to fit butts 3204 - 3205 - 3206

4201.30.0

4201.31.0

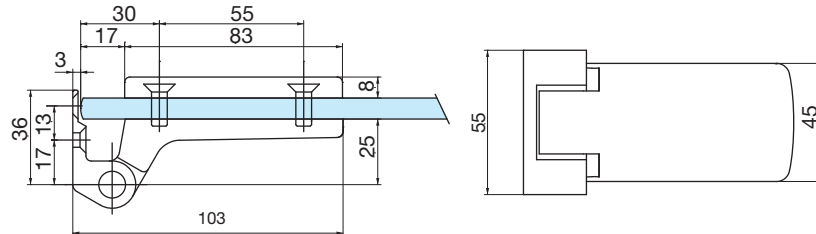
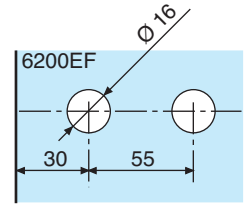
4201.35.0

4201.40.0

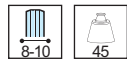
4201.51.0

Serrures et  
paumelles  
Locksets and  
hinges

4203



Références / References



Chromé brillant  
Bright chromium



Chromé mat  
Matt chromium



Effet inox  
Stainless steel effect



Doré  
Gold plated



Laqué blanc 9010  
Lacquered white RAL 9010

Paumelle et fiche multi feuillure pour  
tous types d'huisseries  
Hinge and multi rebate butt for all types  
of frame

4203.30.0

4203.31.0

4203.35.0

4203.40.0

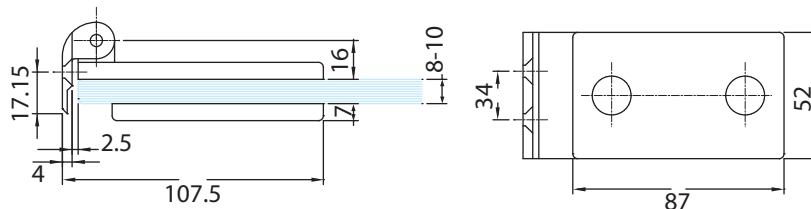
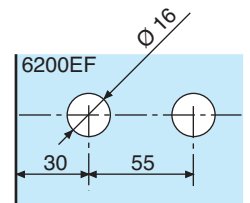
4203.51.0

LES + PRODUITS

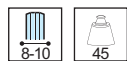
Montage facile  
Tout support

Easy installation  
Fits to all kinds  
of frame

V504



Références / References



Aluminium anodisé Argent Brossé  
Brushed anodised alu silver



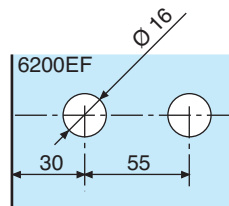
Aluminium anodisé Aninox  
Brushed anodised alu.

Paumelle et fiche pour profil alu encadrement porte en verre PS01  
Hinge and multi rebate butt for door frame profile for glass door PS01

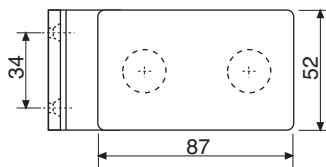
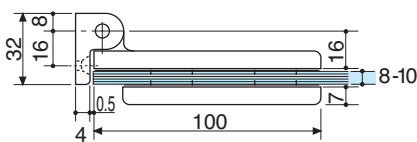
V504.12

V504.36

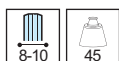
# V505



Serrures et  
paumelles  
Locksets and  
hinges



## Références / References



Laiton poli verni  
Polished varnished brass



Aluminium anodisé Argent Brossé  
Brushed anodised alu silver



Chromé brillant  
Bright chromium



Chromé mat brossé  
Brushed matt chromium



Aluminium anodisé Aninox  
Brushed anodised alu.

Paumelle et fiche multi feuillure  
pour tous types d'huisseries  
Hinge and multi rebate butt for all  
types of frame

V505.01

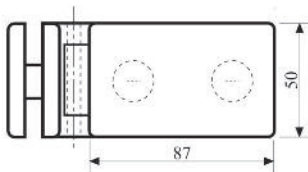
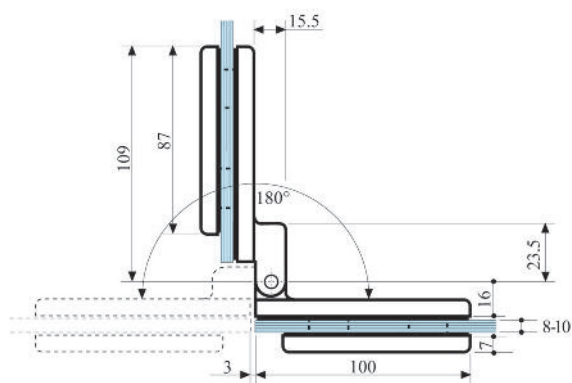
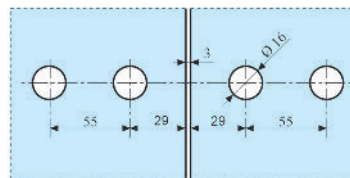
V505.12

V505.30.0

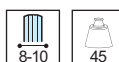
V505.33

V505.36

# V507



## Références / References



Laiton poli verni  
Polished varnished brass



Aluminium anodisé Argent Brossé  
Brushed anodised alu silver



Chromé brillant  
Bright chromium



Chromé mat brossé  
Brushed matt chromium



Aluminium anodisé Aninox  
Brushed anodised alu.

Paumelle double verre/verre pour portes simple action  
Glass to glass hinge for single action doors

V507.01

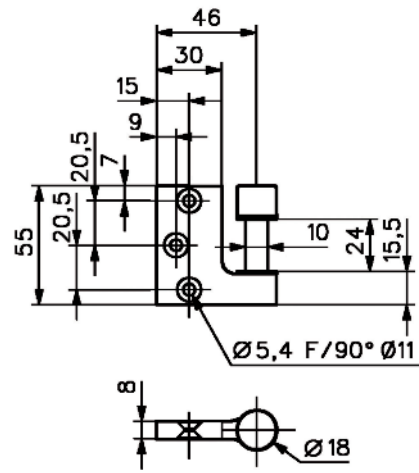
V507.12

V507.30.0

V507.33

V507.36

3204



Chromé brillant  
Bright chromium



Chromé mat  
Matt chromium



Doré  
Gold plated



Laqué blanc 9010  
Lacquered white RAL 9010

Références / References

Fiche à entailler réversible pour huisseries bois, s'utilise avec les paumelles 4200 et 4201  
Reversible flush fixed butt for wooden door frame, to fit to hinges 4200 and 4201

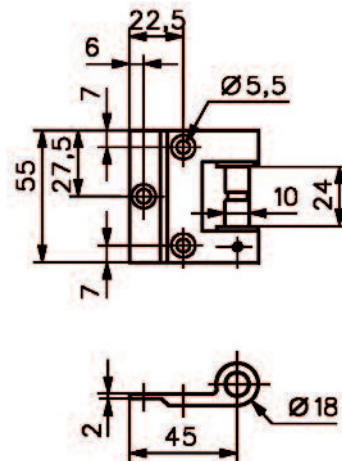
3204.30.0

3204.31.0

3204.40.0

3204.51.0

3206.\*\*.0



Références / References

Fiche en applique réversible pour toutes huisseries bois, métalliques et aluminium, s'utilise avec les paumelles 4200 et 4201  
Reversible surface fixed butt for all types of wooden, metal and aluminium frame, to fit to hinges 4200 and 4201



Laiton poli  
Polished brass



Chromé brillant  
Bright chromium



Chromé mat  
Matt chromium



Effet inox  
Stainless steel effect



Doré  
Gold plated



Laqué blanc 9010  
Lacquered white RAL 9010

3206.00.0

3206.30.0

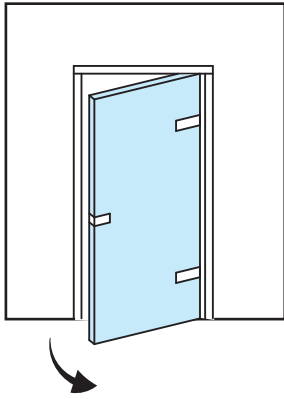
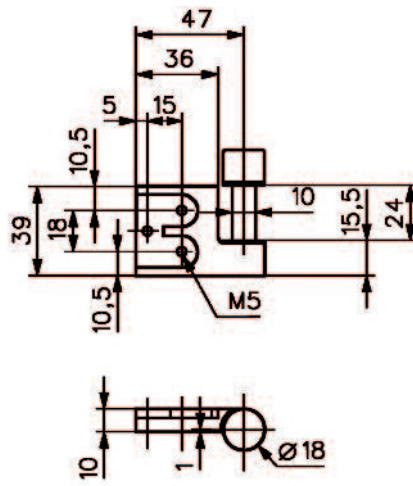
3206.31.0

3206.35.0

3206.40.0

3206.51.0

3205.\*\*.1



Références / References

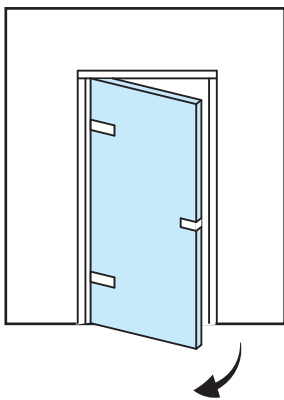
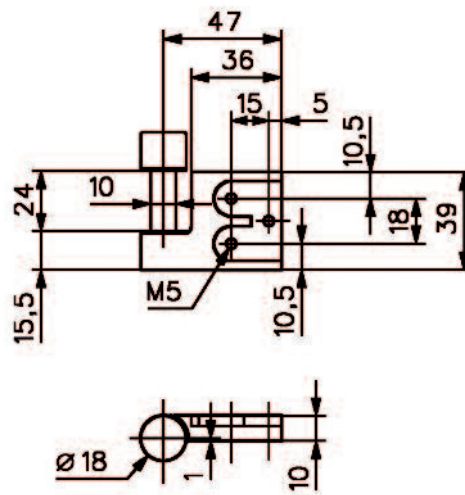
Fiche à entailler (main droite) non réversible pour huisseries métalliques, s'utilise avec les paumelles 4200 et 4201

*Non reversible mortised butt (right hand) for metal frame, to fit hinges 4200 and 4201*

Chromé mat  
Matt chromium

3205.31.1

3205.\*\*.2



Références / References

Fiche à entailler (main gauche) non réversible pour huisseries métalliques, s'utilise avec les paumelles 4200 et 4201

*Non reversible mortised butt (left hand) for metal frame, to fit hinges 4200 and 4201*

Chromé mat  
Matt chromium

3205.31.2