

LOQUETEAUX

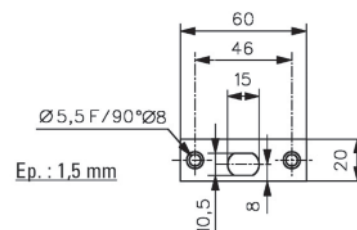
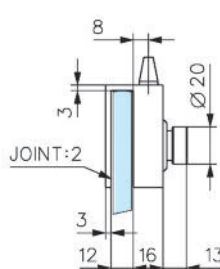
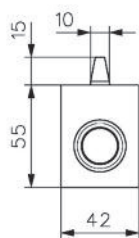
Caractéristiques techniques

- Ne nécessite aucune encoche, sauf réf V529 et V539
- Se pose sur le chant du verre, jeu minimum 4 mm
- Blocage du pêne en position sortie ou rentrée
- Pour verre trempé de 8, 10 et 12 mm
- Livrée avec gâche plate (2 clés pour réf 1448)

Technical features

- Requires no notch, except ref V529 and V539
- Fixing on edge of door, minimum space 4 mm
- Bolt can be blocked in the projecting or retracted position
- For 8, 10 and 12 mm thick toughened glass
- Supplied with flat keep (2 keys for ref 1448)

1445



LES + PRODUITS

The + product

Idéal pour portes
semi-fixe

Idéal for semi-fixed
doors

Références / References



Loqueteau à bouton
Clip on lock with notch



Laiton poli
Polished brass

1445.00.0



Chromé brillant
Bright chromium

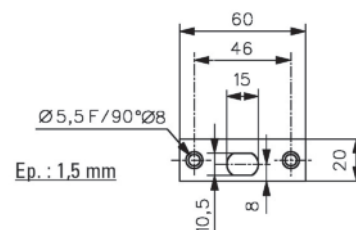
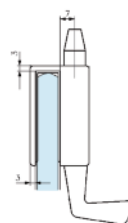
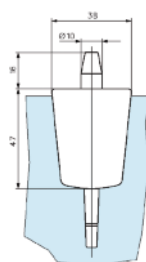
1445.30.0



Chromé mat
Matt chromium

1445.31.0

1446



Références / References

Loqueteau à tirage
Clip on lock with
pull catch



Laiton poli PVD
Polished brass PVD

1446.05.0



Chromé brillant
Bright chromium

1446.30.0



Chromé mat
Matt chromium

1446.31.0



Effet inox
Stainless steel effect

1446.35.0



Laqué Blanc
Lacquered white RAL 9010

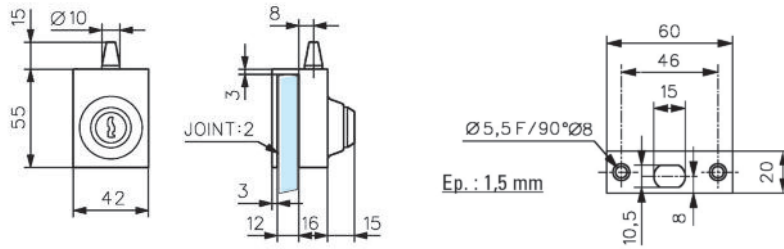
1446.51.0



1446.30.5

1446.31.5

1448



Références / References



Loqueteau à clé
Clip on lock with cylinder



Laiton poli
Polished brass



Chromé brillant
Bright chromium



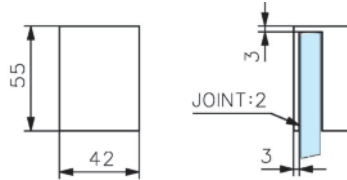
Chromé mat
Matt chromium

1448.00.0

1448.30.0

1448.31.0

1447



Références / References



Boîtier gâche pour loqueteaux série 1445/1448
Matching patch keep for clip on lock series 1445/1448



Laiton poli
Polished brass



Chromé brillant
Bright chromium



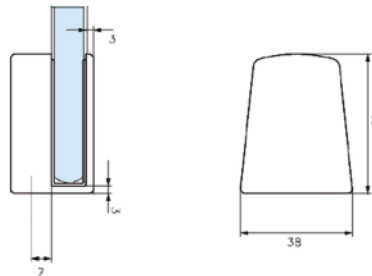
Chromé mat
Matt chromium

1447.00.0

1447.30.0

1447.31.0

1449



Références / References



Boîtier gâche pour
loqueteaux série 1446
Matching patch keep for
clip on lock series 1446



Laiton poli PVD
Polished brass PVD



Chromé brillant
Bright chromium



Chromé mat
Matt chromium



Effet inox
Stainless steel effect



Laqué Blanc
Lacquered white RAL 9010

1449.05.0

1449.30.0

1449.31.0

1449.35.0

1449.51.0