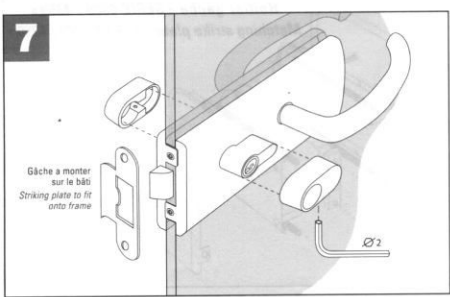
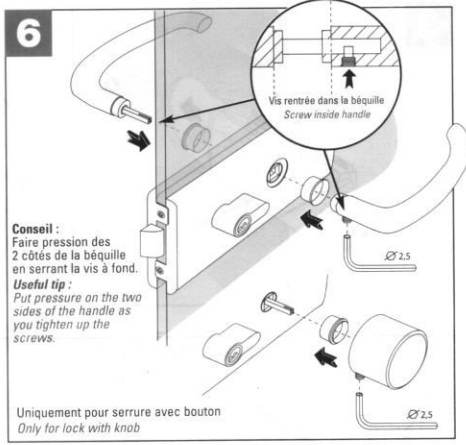
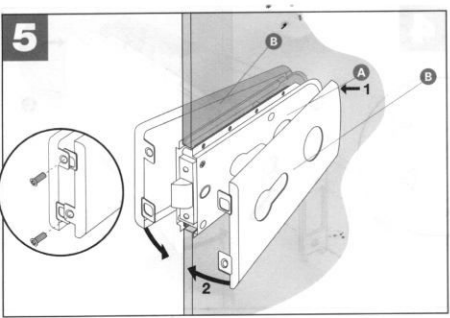
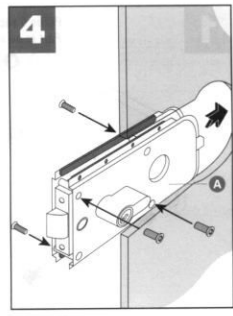
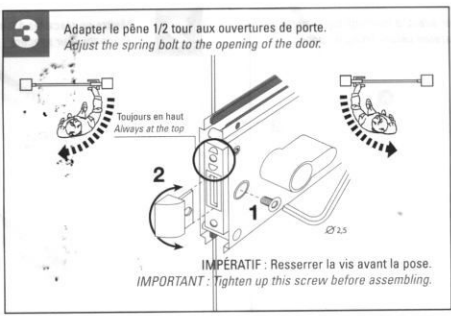
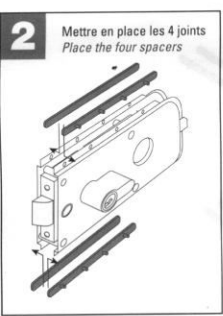
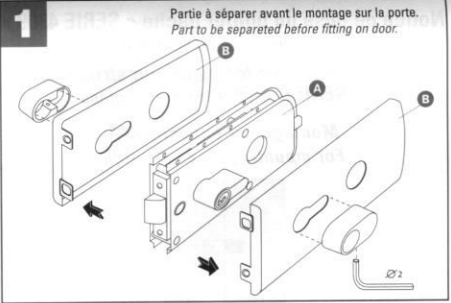
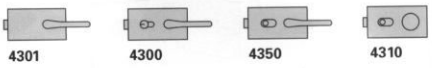


Notice de pose pour serrure « SERIE 4300 »
pour verre d'épaisseur 8 mm

Fitting instructions for « SERIES 4300 »
lock onto 8 mm thick glass

Montage sur encoche 64A
For mounting on 64 A notch



Pour verre de 10 mm, commander 1 référence S 229810 (4 joints de 1 mm)
For glass of 10 mm, order 1 ref. S 229810 (4 spacers of 1 mm)

Entretien : Les versions laiton 4300.00.0 et 4301.00.0 doivent être nettoyées avec un produit spécifique pour l'entretien du laiton.
Graissage : Pulvériser au moins une fois par an un lubrifiant par l'orifice du 1/2 tour.
Maintenance : The version in Brass item 4300.00.0 and 4301.00.0 must be cleaned using a product specifically for brass.
Lubrication : At least once a year spray a lubricant into the spring bolt cavity.