



PINCES EXTENSEUR

POUR RIVETS AVEUGLES

MODE D'EMPLOI

E-640RX

DESIGNED IN FRANCE BY
Scell-it®



min.
Ø **3.0** mm



max.
Ø **6.4** mm

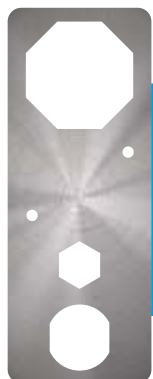
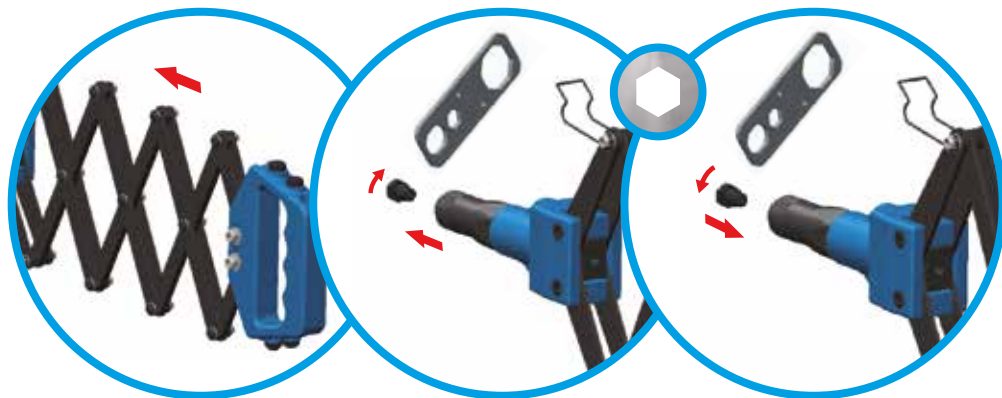


CARACTÉRISTIQUES ET DIMENSIONS DE LA PINCE

Capacité : Ø3.0 à 6.4 mm
Longueur (fermée) : 310 mm
Poids : 2.8 kg
Matière corps : Fonte d'aluminium
Poignée mobiles : Acier
Grip poignée : ABS



RÉGLAGE

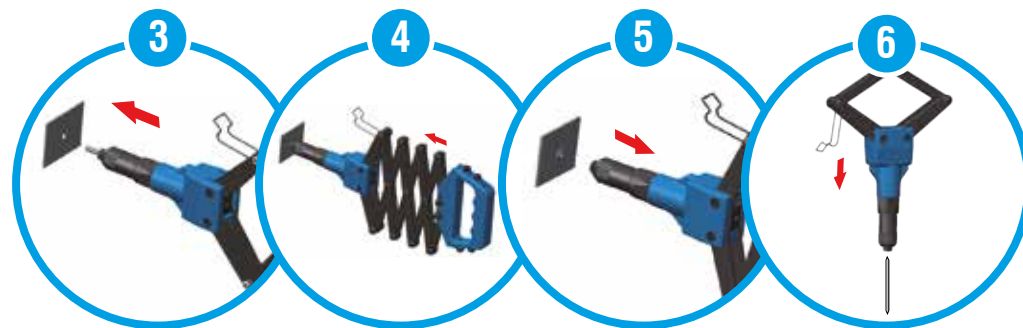
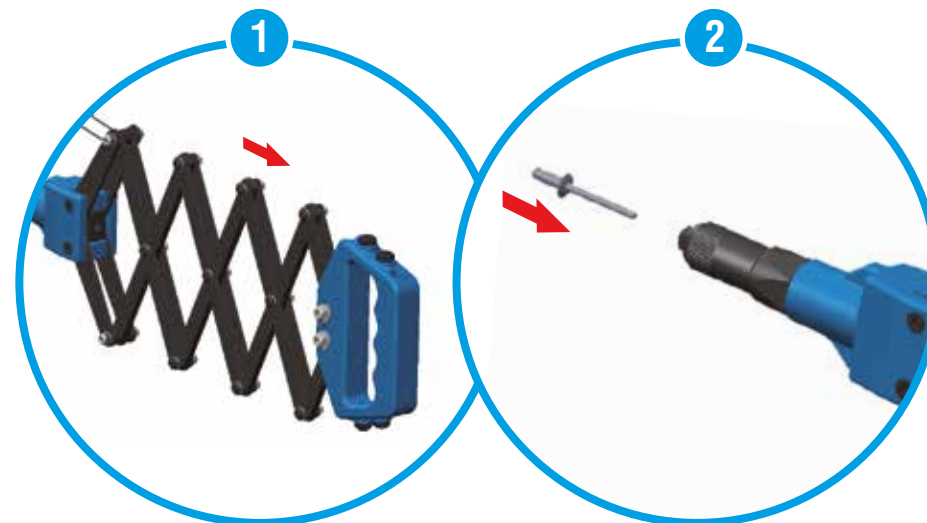


CLÉ

NEZ DE POSE



UTILISATION

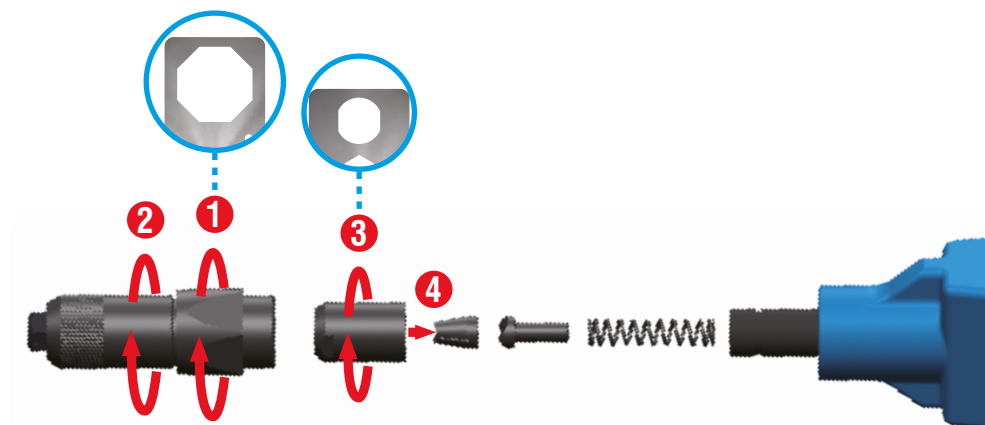




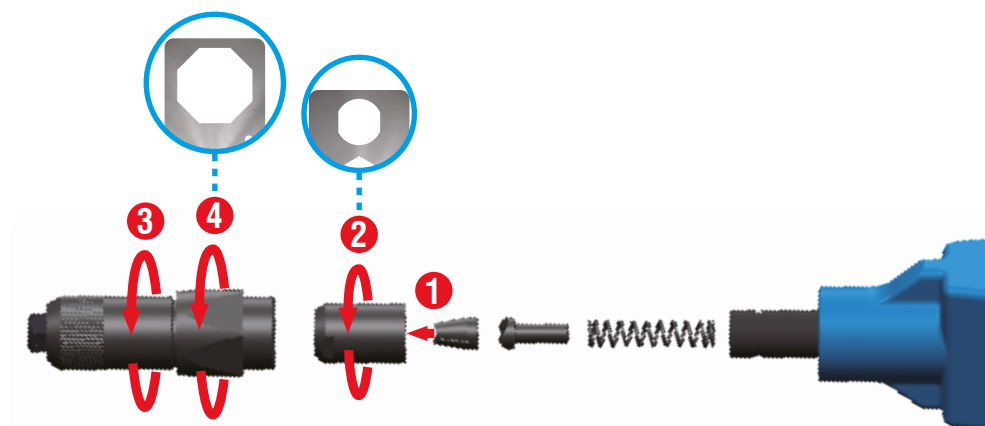
FR
EN
PL

REPLACEMENT DU MORS

1. DÉVISSER LE MORS AVEC LA CLÉ



2. VISSER LE NOUVEAU MORS AVEC LA CLÉ



Scell-it®

28 rue Paul Dubrule - 59810 LESQUIN - Tél. : 03 20 32 98 18 - www.scellit.com

TWO HANDS BLIND

RIVET NUT TOOL

USER MANUAL

E-640RX

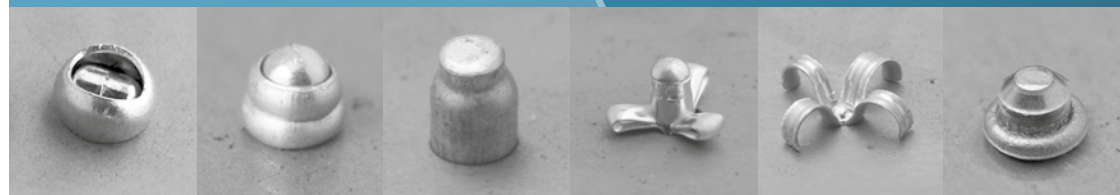
DESIGNED IN FRANCE BY
Scell-it®



min.
Ø **3.0** mm



max.
Ø **6.4** mm

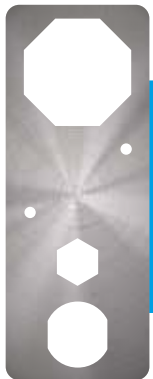
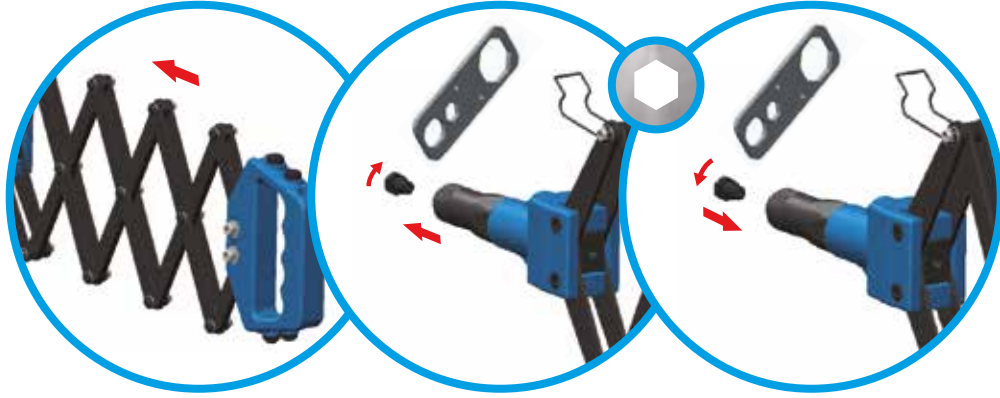


TOOL CAPACITIES AND SPECIFICATIONS

Capacities: Ø3.0 à 6.4 mm
Length (close): 310 mm
Weight: 2.8 kg
Body material: cast aluminium
Adjustable handles: Steel
Grip handles: ABS



SETTING

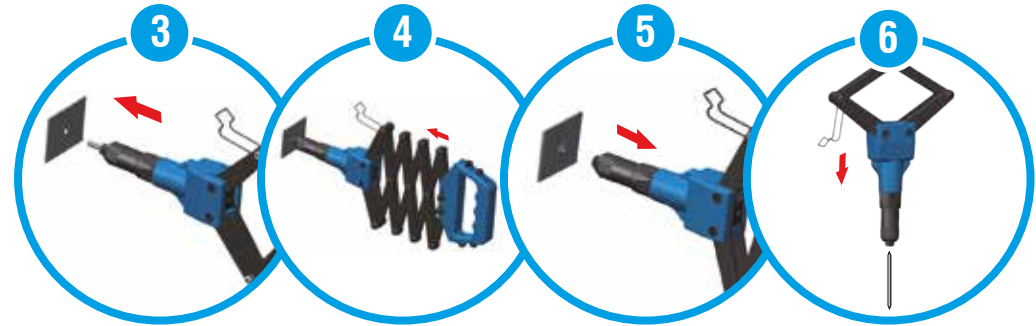


WRENCH

NOSES PIECES

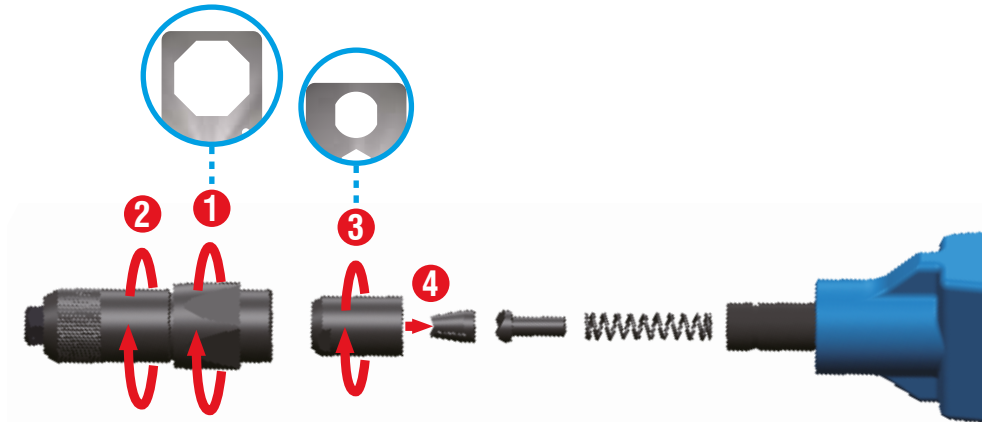


OPERATION

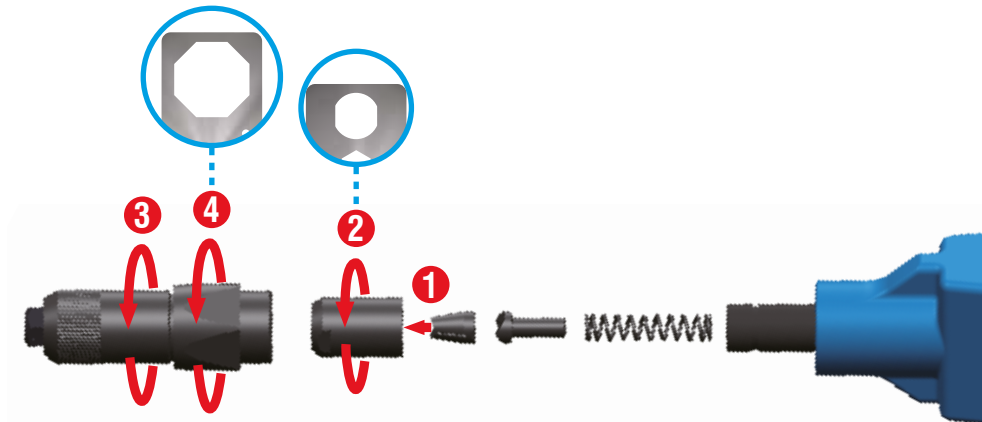


UNINSTALLATION OF JAW

1. SCREW OFF THE JAW WITH THE WRENCH



2. SCREW ON THE NEW JAW WITH THE WRENCH



Scell-it®

28 rue Paul Dubrule - 59810 LESQUIN - Tél. : 03 20 32 98 18 - www.scellit.com

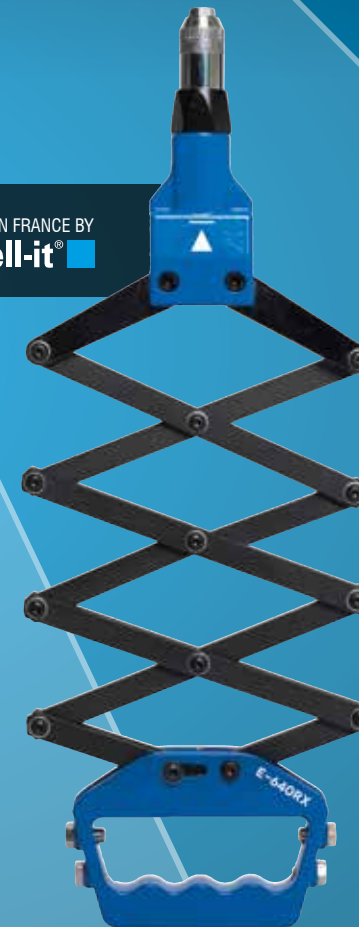
NITOWNICA RĘCZNA

HARMONIKOWA


INSTRUKCJA OBSŁUGI

E-640RX

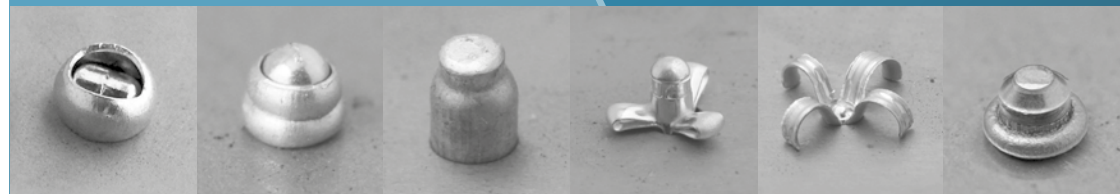
DESIGNED IN FRANCE BY
Scell-it®



min.
Ø 3.0 mm



maks.
Ø 6.4 mm

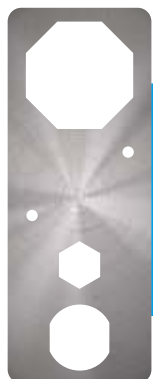
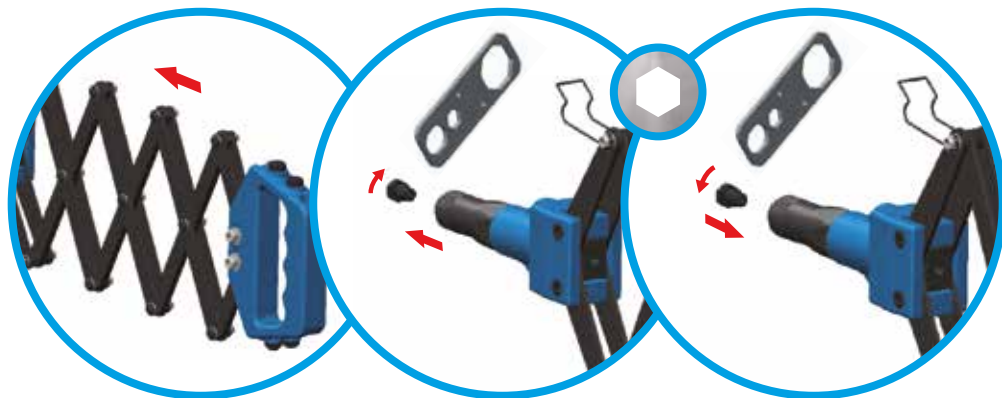


ZAKRES NARZĘDZIA I SPECYFIKACJA

Zakres: Ø3.0 à 6.4 mm
Długość (zamknięta): 310 mm
Waga: 2.8 kg
Materiał głowica: Aluminium
Ramię: Stal
Materiał uchwyt: ABS plastik



USTAWIENIA

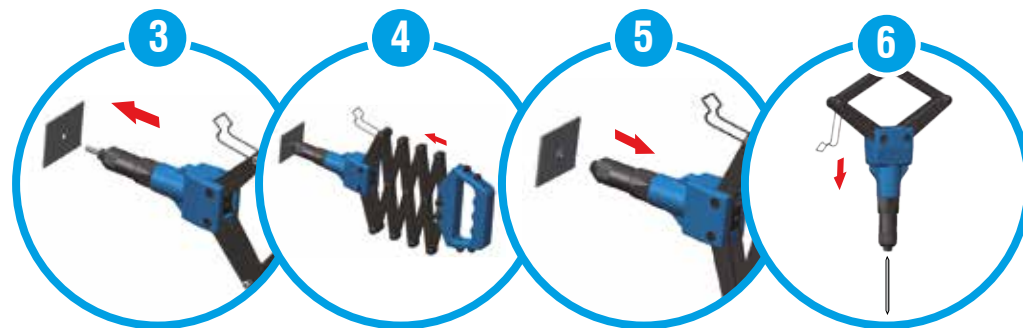
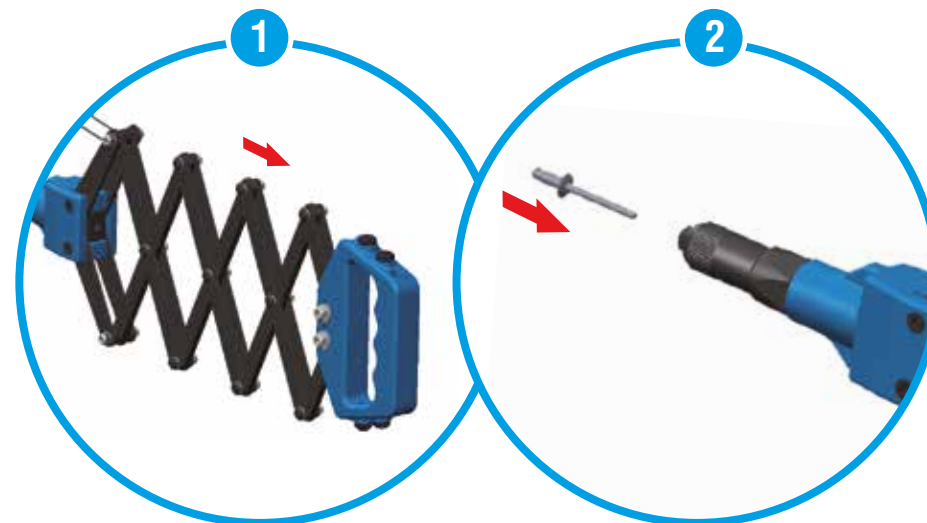


KLUCZEM

KOŃCÓWKI

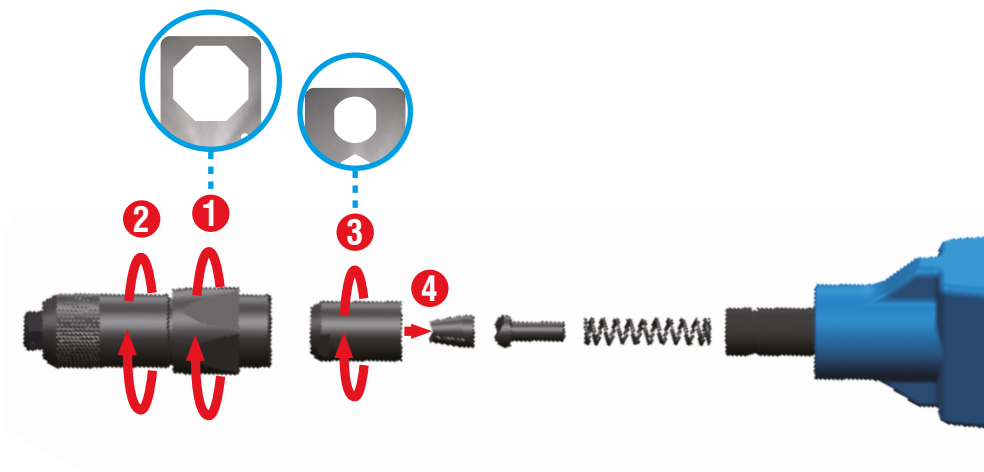


EKSPLOATACJA



ODINSTALOWANIE SZCZĘKI ZACISKKOWE

1.ODKRĘĆ SZCZĘKI ZACISKKOWE



2.PRZYKRĘĆ SZCZĘKI ZACISKKOWE

