



PINCES À LEVIERS

POUR RIVETS AVEUGLES

— MODE D'EMPLOI —

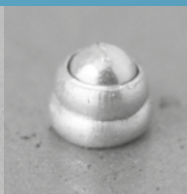
E-64ORV



min.
Ø **3.0** mm



max.
Ø **6.4** mm

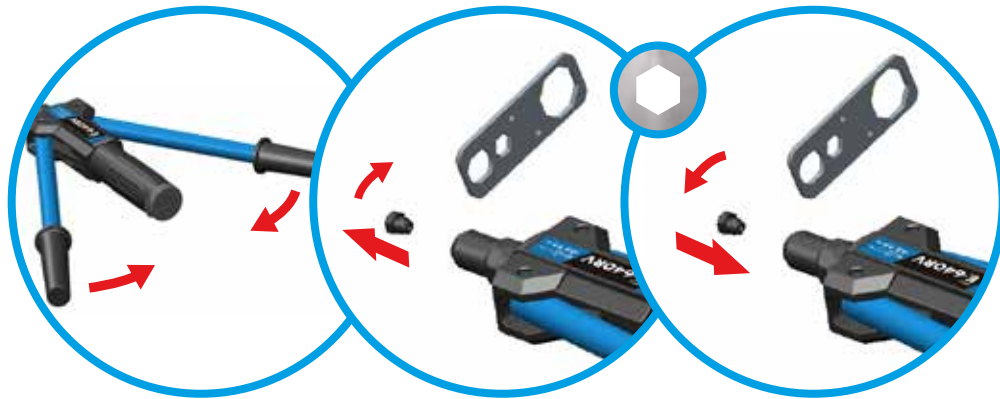


CARACTÉRISTIQUES ET DIMENSIONS DE LA PINCE

Capacité : Ø3.0 à 6.4 mm
Longueur : 426 mm
Poids : 1.4 kg
Leviers : Tubes acier
Matière poignées : Plastique ABS



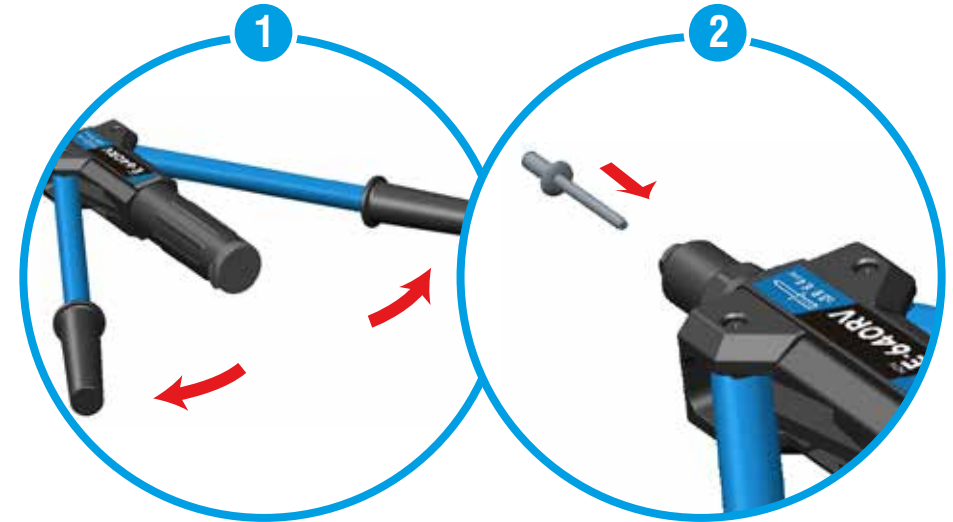
RÉGLAGE



CLÉ



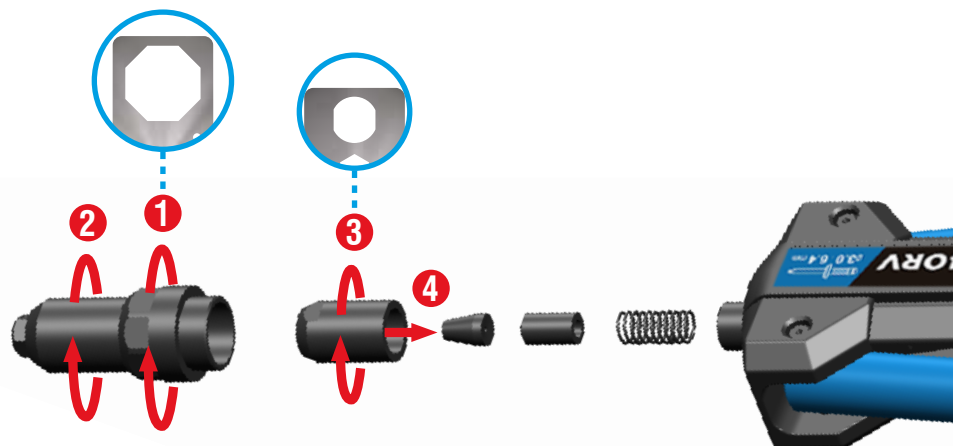
UTILISATION



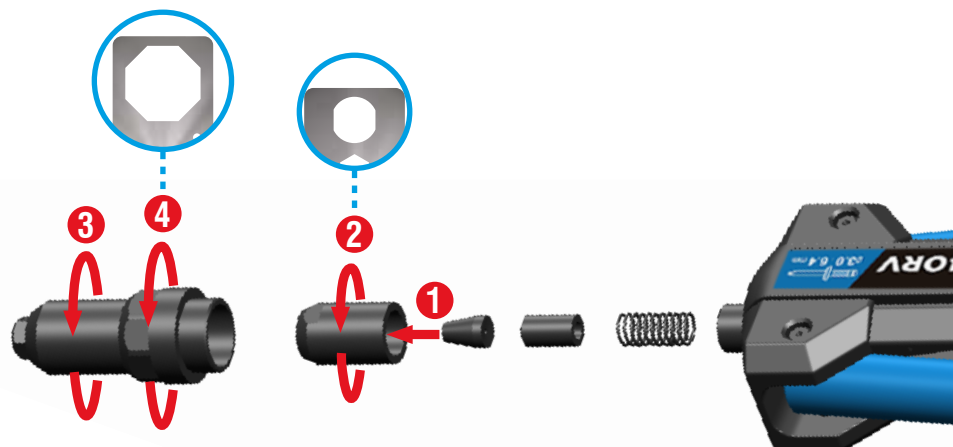
FR
EN
PL

REPLACEMENT DU MORS

1. DÉVISSER LE MORS AVEC LA CLÉ



2. VISSER LE NOUVEAU MORS AVEC LA CLÉ



Scell-it®

28 rue Paul Dubrule - 59810 LESQUIN - Tél. : 03 20 32 98 18 - www.scellit.com



TWO HANDS BLIND

RIVET NUT TOOL

USER MANUAL

E-64ORV

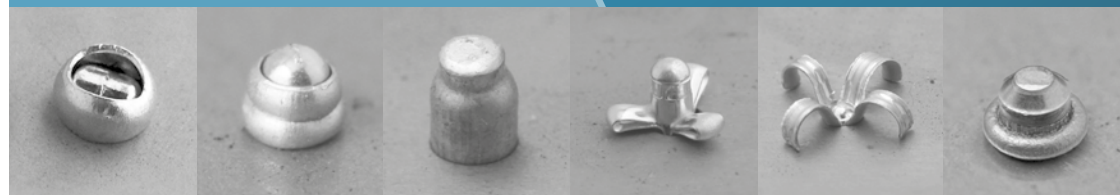
DESIGNED IN FRANCE BY
Scell-it®



min.
Ø **3.0** mm



max.
Ø **6.4** mm



TOOL CAPACITIES AND SPECIFICATIONS

Capacities: Ø3.0 à 6.4 mm
Length: 426 mm
Weight: 1.4 kg
Levers: Steel
Handles material: ABS



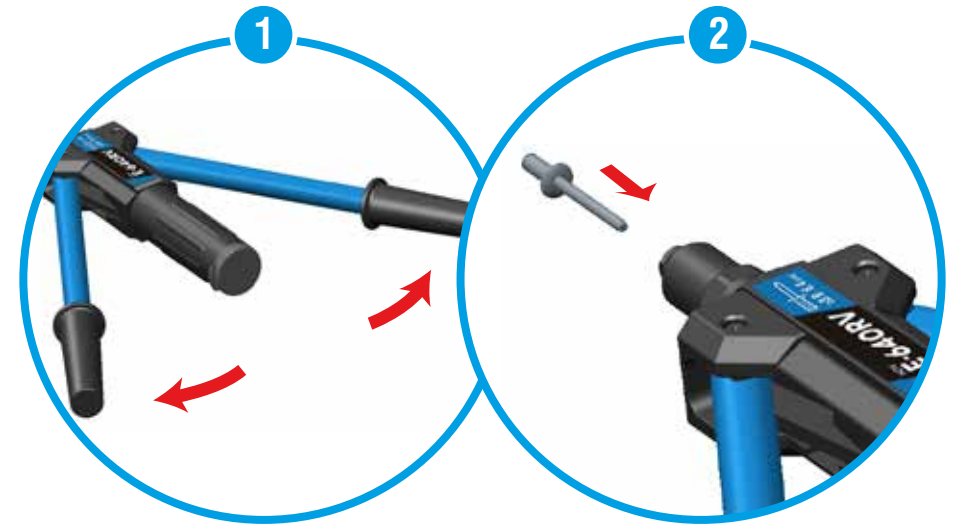
SETTING



WRENCH



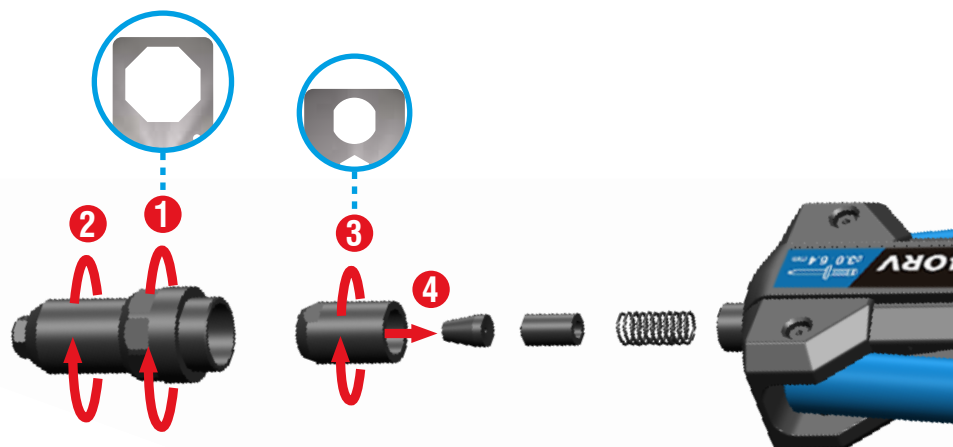
OPERATION



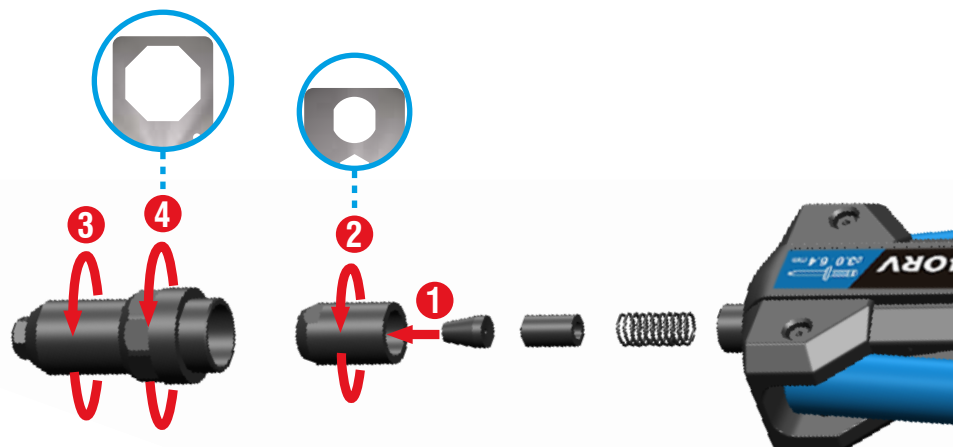
FR
EN
PL

UNINSTALLATION OF JAW

1. SCREW OFF THE JAW WITH THE WRENCH



2. SCREW ON THE NEW JAW WITH THE WRENCH



Scell-it®

28 rue Paul Dubrule - 59810 LESQUIN - Tél. : 03 20 32 98 18 - www.scellit.com



NITOWNICE

RĘCZNE

INSTRUKCJA OBSŁUGI

E-64ORV

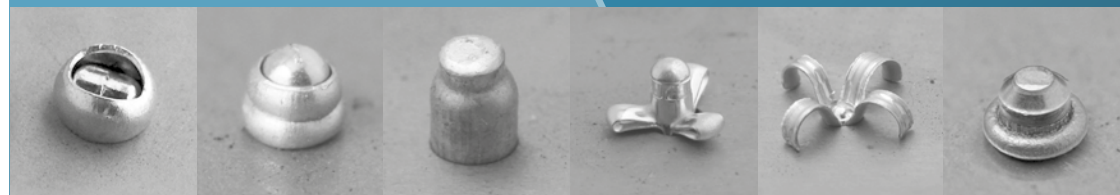
DESIGNED IN FRANCE BY
Scell-it®



min.
Ø **3.0** mm



maks.
Ø **6.4** mm

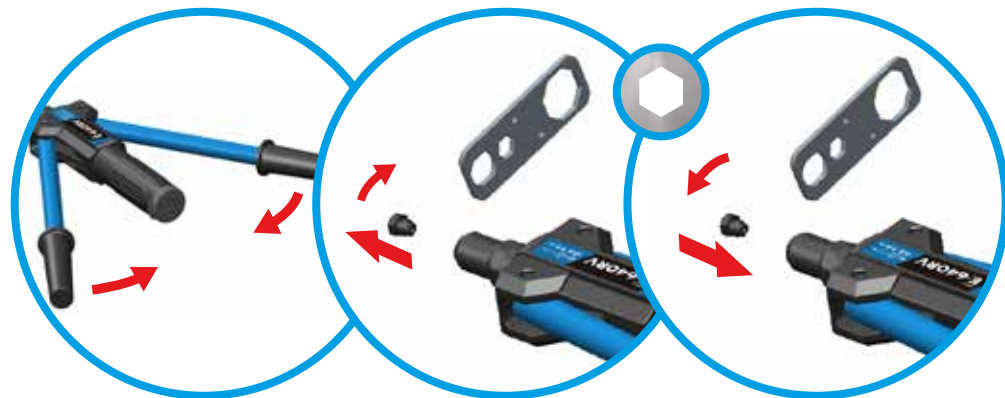


ZAKRES NARZĘDZIA I SPECYFIKACJA

Zakres: Ø3.0 à 6.4 mm
Długość: 426 mm
Waga: 1.4 kg
Dźwignie: rury stalowe
Materiał uchwyt: ABS plastik



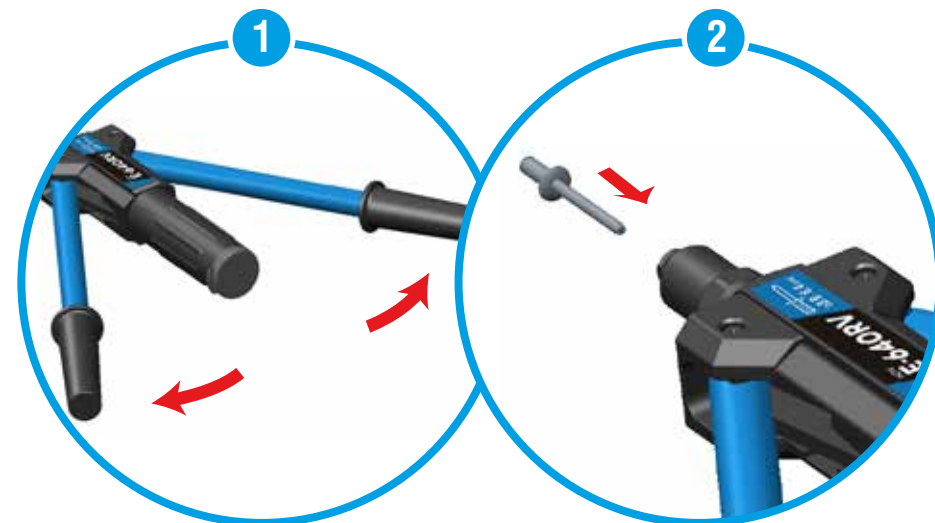
USTAWIENIA



KLUCZEM

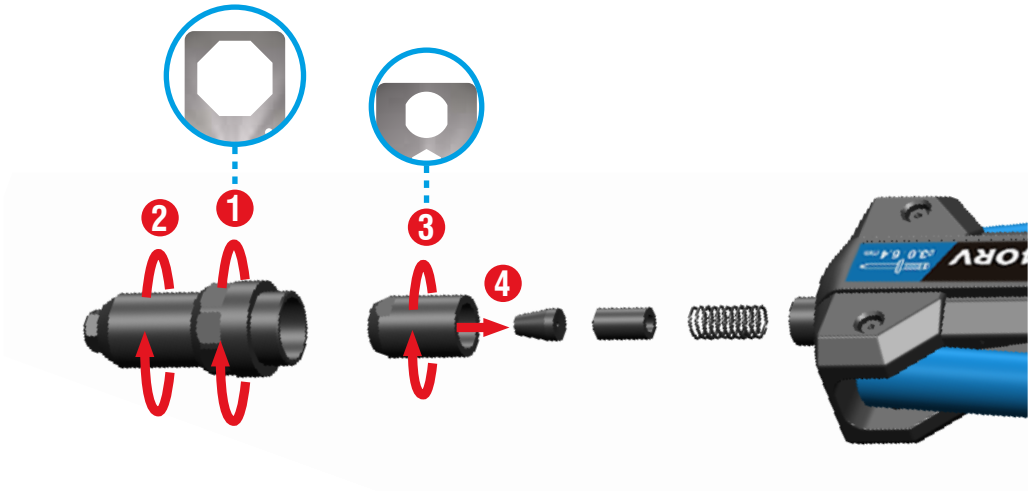


EKSPLOATACJA



ODINSTALOWANIE SZCZĘKI ZACISKKOWE

1.ODKRĘĆ SZCZĘKI ZACISKKOWE



2.PRZYKRĘĆ SZCZĘKI ZACISKKOWE

